

Calvary Lutheran Christian Preschool



God keeps His promises.

School readiness & discipleship
training for children ages 3, 4 and 5.

**2508 Washington Ave SE
Bemidji, MN 56601**

751-1893

www.calvarybemidjipreschool.org

2021-22

Quality School Readiness Programming
in a Christian Atmosphere

Our Mission Statement

Calvary Lutheran Christian Preschool is an outreach ministry of Calvary Lutheran Church. Our mission is to provide pre-school age children with quality school readiness opportunities in a safe and nurturing Christian setting.

Our Vision Statement

To be a premier preschool recognized for empowering our students to be academic leaders and faithful disciples.



The preschool will introduce and educate children about Christ for the first time and for a lifetime.

Message to Parents

Calvary Lutheran Christian Preschool offers three class options. These classes differ in the age they serve, and in the time they operate. But each class fits within our overall framework:

- Christian faith is taught formally and informally throughout each day.
- The foundation of reading readiness includes vocabulary, book & print rules, knowing our ABC's, rhyming, and beginning sounds.
- Families First...we want you to feel comfortable in our school. The door may be physically closed but the door is always open to you, so come on in for a few minutes or all day!
- Small groups for learning
- Large motor development in our gym and on our playground
- Christ-centered and qualified staff

Calvary Lutheran Preschool admits students of any race, color, religion, and national or ethnic origin.

Calvary Lutheran
2508 Washington Avenue SE
Bemidji, Minnesota 56601

Calvary Lutheran Christian Preschool



Day to Day Focus

- Weekly chapel
- Small groups
 - ⇒ Faith development
 - ⇒ Fine motor skills
 - ⇒ School readiness
- Circle play
 - ⇒ Social skills
 - ⇒ Putting faith into action
- Story Time
 - ⇒ Listening skills
 - ⇒ Vocabulary
- Crafts
 - ⇒ Fine motor skills
 - ⇒ Tools of school instruction
- Calendar
 - ⇒ Math & number awareness
 - ⇒ Background knowledge
- Music
 - ⇒ Large motor skills
 - ⇒ Listening skills
- Gym/Playground
 - ⇒ Team Play
 - ⇒ Movement
 - ⇒ Social Skills

Full Day Class Options (see extra services)

The Purple Group 4 & 5 years old * (see age requirements)

\$335/month++

M W F all day (requires a brown bag lunch from home; includes a rest time, and mid-day recess)
7:15-8:30 early drop off (extra fee applies)
8:30-3:30 school day
3:30-5:45 late pick-up (extra fee applies)

This class is generally for kids planning to go to Kindergarten the following year.

The Blue Group 3 & 4 years old ** (see age requirements)

\$240/month++

T TH all day (requires a brown bag lunch from home; includes a rest time, and mid-day recess)
7:15-8:30 early drop off (extra fee applies)
8:30-3:30 school day
3:30-5:45 late pick-up (extra fee applies)

This class is an all-day option for older three- year olds and younger four-year olds who may have an additional year of preschool before Kindergarten.

Full or Half Day Class Option (see extra services)

The Orange Group 33 months*** (see age requirements)

\$130/month++—half day (limit 3)

T TH morning
7:15-8:30 early drop off (extra fee applies)
8:30-11:30 school day

OR

33 months* (see age requirements)**

\$240/month++—full day (limit 12)

T TH all day (requires a brown bag lunch from home; includes a rest time, and mid-day recess)
7:15-8:30 early drop off (extra fee applies)
8:30-3:30 school day
3:30-5:45 late pick-up (extra fee applies)

Registration Fee: \$60.00 non-refundable, non-applicable to tuition payments.

++ ALL COSTS SUBJECT TO CHANGE

Scholarships may be available to aid with tuition costs. Forms will be part of the fall registration packet.

Extra Services:

Early morning drop off (7:15-8:20) will be available. Cost is \$4.50 per day. Large motor skills is the focus.

Late afternoon pick up (3:40-5:45) will be available. Cost is \$6.00 per day. Large and small motor skills are the focus.

Age Requirements

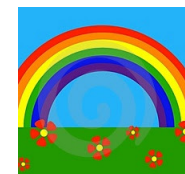
* must be 4 on or before September 1 of the school year you are registering for

** must be 3 (36 months) on or before May 1 of the school year you are registering for

*** must be 33 months and potty trained at their time of enrollment which may be anytime between September 1 and February 28 of the school year you are registering for

Bemidji School District ages for Kindergarten:
Must be 5 (five) on or before September 1 of the school year.

***Stop by and visit anytime;
you are always welcome;
our doors are always open!
(This depends on COVID guidelines
next fall.)***



The colors of the rainbow remind us that we are a part of God's promise.